

M2E-5000 Contribution MPEG2 Encoder

M2E-5000 is a high quality MPEG2 Encoder with multiple analog and digital video and audio inputs, multiple DVB-ASI and IP/Ethernet outputs and remote web-based and SNMP management.

Features

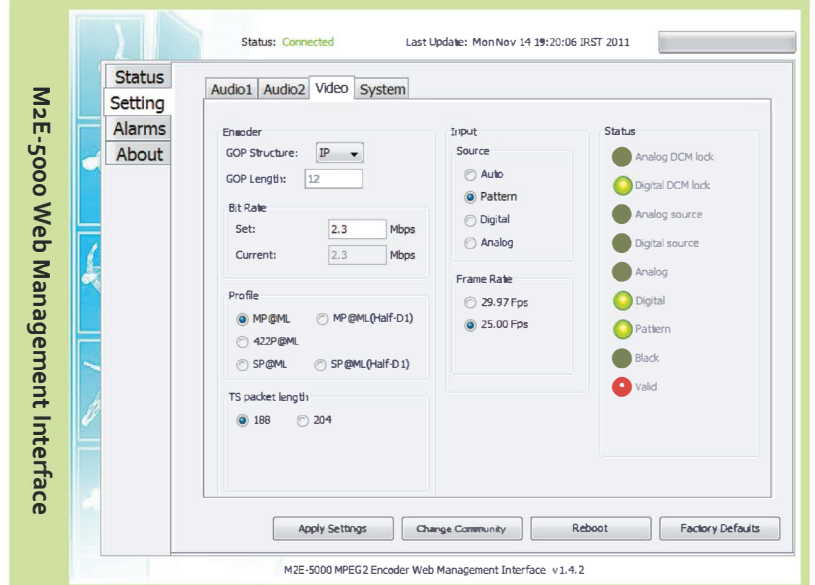
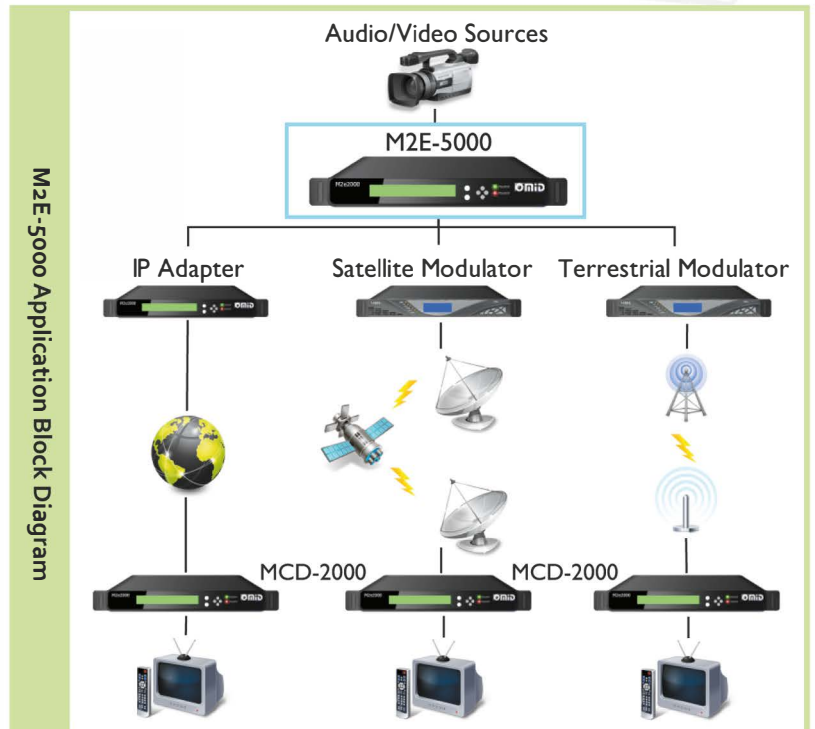
- Contribution video and audio quality
- High reliability and 24/7/365 operation
- Live IP streaming to up to eight multicast/unicast destinations
- Simultaneous encoding of up to two stereo audio pairs
- 4:2:2, Main and Simple Profile at Main Level video encoding
- Web-based control and monitoring
- SNMP management
- Compatible with HMS-6000 Hardware Management System
- Compact 1RU size
- SDI de-embedding of two stereo audio pairs
- Up to 6 MPEG-2 ASI transport stream outputs

Applications

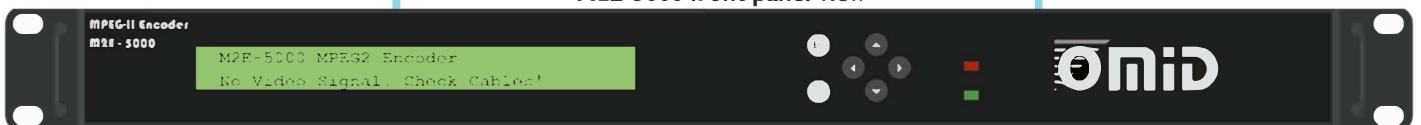
- IP, SDH and optical fibre inter- or intra-studio links
- IPTV
- Telemedicine
- Telepresence and Video conferencing
- Digital signage
- Satellite or terrestrial uplinks or head-ends
- Satellite News Gathering (SNG) or IP SNG
- Microwave links
- eLearning
- Remote video surveillance
- Cable broadcasting
- LAN TV applications

Web Management Interface

- Password protected
- Based on SNMP
- Firmware upgrade from network
- Live monitoring of inputs and encoding engine
- Configuration of all device parameters



M2E-5000 front panel view



M2E-5000 rear panel view



M2E-5000 Contribution MPEG2 Encoder

Related Products

- MCD-2000 MPEG2/MPEG4/H.264 decoder
- HMS-6000 Hardware Management System

Technical Specifications

Input Video	<ul style="list-style-type: none">• Single SDI (Serial Digital Interface) with 4:2:2 or 4:2:0 chroma resolutions, 10/8 bit precision and 270 Mbps rate• Analog video input (Option M2E-AVIO)• 625 and 525 line PAL and NTSC standards supported• Health monitoring LEDs• Internal color bar and black pattern generator• Automatic video source and format detection
Input Audio	<ul style="list-style-type: none">• Up to two stereo digital audio inputs (Option M2E-DAIO)• Up to two stereo analog audio inputs (Option M2E-AAIO)• AES/EBU, 48 KHz, 16/24 bit• Up to two digital audio inputs de-embedded from input SDI (Option M2E-EAIO)• Internal test tone or silence generator
Outputs	<ul style="list-style-type: none">• Two DVB-ASI outputs on base system• Up to four additional DVB-ASI outputs (Option M2E-AASI)• IP output to up to eight unicast/multicast destinations with UDP or RTP/UDP (Option M2E-VOIP)• Two SDI re-clocked loop through outputs
Video Encoding	<ul style="list-style-type: none">• Constant Bit Rate (CBR) encoding• 4:2:0 MPEG2 Main Profile at Main Level, MP@ML (ISO-13818-1, 2, 3)• Rates of 0.5 to 15 Mbps for MP@ML• 4:2:2 MPEG2 4:2:2 Profile at Main Level, 422P@ML (ISO-13818-1, 2, 3) (Option M2E-422P)• Rates of 3 to 50 Mbps for 422P@ML• Simple Profile at Main Level SP@ML (ISO-13818-1, 2, 3)• I, IB, IBB, IP, IBP and IBBP GOP Structures supported.• GOP lengths of 1 to 120 supported.
Audio Encoding	<ul style="list-style-type: none">• MPEG I Layer II audio encoding (ISO-13818-3)• Output rates of 96 Kbps up to 384 Kbps• One stereo pair encoding on base system• Simultaneous second stereo pair encoding (Option M2E-AUD2)
Management and Control	<ul style="list-style-type: none">• Full monitoring and control of system and encoding parameters through<ul style="list-style-type: none">• Front panel• Password-protected web browser interface (Option M2E-RIMO)• SNMP and HMS-6000 Hardware Management System• Sound feedback for keypad interactions and sound alarms on faults.
Physical Dimensions and Power	<ul style="list-style-type: none">• Dimensions (WxDxH): 490 x 350 x 44 mm (19" x 14" x 1RU)• Approximate weight: 4 Kg• Power: 100-285V, 3-pin IEC connector, with removable circuit breaker.• Consumption: 25 Watts
Environmental Conditions	<ul style="list-style-type: none">• Operating temperature: 0°C to 50°C (32°F to 122°F)• Operating humidity: 10%-95% non-condensing

M2E-5000 Contribution MPEG2 Encoder

Ordering Information

Ordering Number	Description	Quantity	Ordering Number	Description	Quantity
M2E-5BAS	M2E-5000 Base System	1	M2E-VOIP	IP Streaming Output Option	1
M2E-AVIO	Analog Video Input Option	1	M2E-422P	4:2:2 Profile Encoding Option	1
M2E-DAIO	Digital Audio Input Option	1-2	M2E-AUD2	Second Audio Encoding Option	1
M2E-AAIO	Analog Audio Input Option	1-2	M2E-RIMO	Remote IP Management Option	1
M2E-EAIO	Embedded Audio Input Option	1	M2E-ATSY	Additional Technical Support Year Option	1-5
M2E-AASI	Additional ASI Output Option	1-4			